



Specs

NEW STORAGE BUILDING FEATURES

Standard Construction Features

- *4x6 treated, notched runners in floor with angle cut ends
- *2x4 pressure treated floor joists, 16" O.C. (2x6 used in 14'+ wide buildings)
- *5/8" tongue and groove plywood flooring or 3/4" Pinnacle
- *6'4" side walls with 2x4 studs, 16" O.C.
- *4' entry door on 8' wide and 6' double doors on 10' wide or greater
- *Painted and Treated shed include custom wood doors. Vinyl sheds include fiberglass doors. Metal sheds include metal doors
- *Ventilation in Gable and Ridge-Shingled buildings have ridge vent running length of building with shingles overtop of vent
- *Double header over doors
- *Roofing overhang with drip edge
- *Spring loaded barrel bolts
- *Lockable T-handle with two keys (door handle to match door type with keys)

NEW STORAGE BUILDING FEATURES

Standard Construction Features Continued

- *Warranty- 40+ year warranty on siding, 30 year shingles or 40 year metal roofing, 20 year Galvalume
Metal siding has 40 year paint adhesion warranty
- *Radiant Barrier OSB roof sheathing
- *Engineered trusses assembled with metal truss plates on special press
- *Painted buildings are LP Smartside with SilverTech radiant barrier
- *Utility buildings (A-frame) have 6/12 roof pitch
- *All 16' and longer lofted barns have two lofts. Under 16' come standard with one loft
- *6' Double Barn doors standard on all buildings. 4' and 8' Metal doors available as an upgrade
- *Upgrade to LP SmartLap installation-SilverTech backed OSB as base with LP SmartLap placed over base plywood

NEW STORAGE BUILDING FEATURES

Utility Sheds



Standard Features:

- A-frame roof
- Available with Shelving and Workbench options
- Available with optional Garage, Porch, Handyman, and Electrical Packages
- Side Entry or End Entry

Utility Sheds

30 year shingles(tacked to roofing to avoid nail penetration)



Painted and treated sheds include wood doors



A-frame have a 6/12 roof pitch

4x6 treated, notched beams (runners) with angle –cut ends



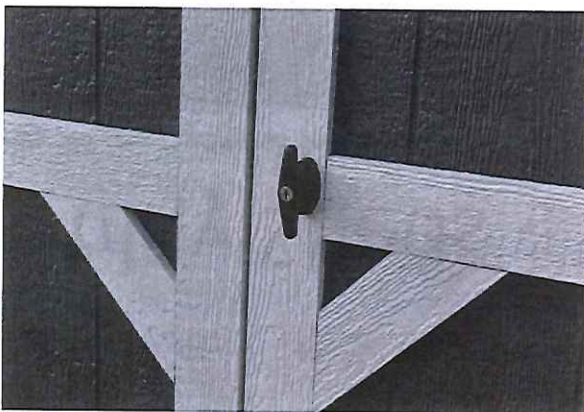
Roof overhang with drip edge



Metal thresholds and transition barns on doors



Lockable T-Handle with 2 keys



Spring loaded barrel bolts

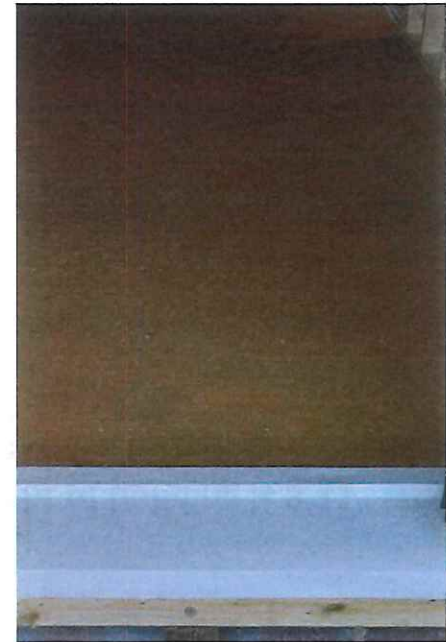
LP SmartSide Panels with SilverTech-Randiant Barrier Siding

Ventilation in both Gable and Ridge (Gable vent not blocked by 2 x 4 support)



LP TechShield Radiant Barrier sheathing

Double Top Plates



Electric Package-100 amp panel box, 2 center ridge mount lights, 3 outlets



19/32" LP Prostruct flooring



Height of building is 9'11" with 6'2" side walls, lofted barn height is 10'1" 6'4" sidewalls

Width from center to center of runners is 66" for 10' wide buildings or 64" for 12' wide buildings

NEW STORAGE BUILDING FEATURES

Lofted Barns



Standard Features

- Gambrel Roof
- 4 Loft up to 12' long
- (2) 4' Lofts in buildings 16' or longer
- Additional loft space available
- Available with shelving
- Available with our popular Garage, Porch and Electrical Packages
- Side or End Entry
- Center of runners-66" for 10' wide units; 64" for 12' units-118" from center to center of runners
- Building height is 10'11"



Lofted Barns

- 30 year shingles (tacked to roofing to avoid nail penetration)
- 40 year metal roofing
- Roof overhang with drip edge
- Lockable T handle with two keys
- Painted and treated sheds include wood doors



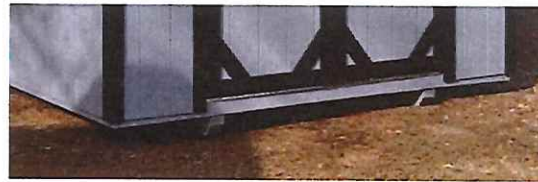
AVAILABLE PACKAGES

Electrical Package

- 100 Amp Panel
- 2 Lights with one switch
- 3 Outlets with covers
- Available upgrade for all buildings
- All Electrical packages include pigtail



NEW STORAGE BUILDING FEATURES



- Classic Gable Vents
- Engineered Trusses
- 30 year Architectural Shingles or 40 year Metal Roof
- 6/12 Pitch Roof 8-10' wide, 5/12 pitch roof 14'+ Wide
- Double Top Plates (per Code)
- Wood Eaves, Soffit and Door Jams
- Thermal Radiant Barrier on Walls and Roof
- 2x4 wall studs, 16" O.C.
- 2x4 Pressure Treated Floor Joist, 16" O.C.
- 7'4" side walls
- Two 24 x36 windows with shutters
- Diamond Plate Threshold
- 5/8" Tongue and Groove floors
- 6' Double Doors, Deluxe Hinges



NEW STORAGE BUILDING FEATURES

Upgraded Utility Shed



Standard Features

- Transom Windows
- (2)24"x36" Windows with shutters
- Deluxe Hinges and Diamond Plate Threshold
- Classic Gable Vents
- 7'4" Side Walls
- Available with Dormer Packages
- Available with all Porch Packages
- Side Entry or End Entry



- Loft Shelving on both ends standard for 16' and longer units
- LP Tech Shield Radiant Barrier roof Sheathing
- LP SmartSide Panels with SilverTech-Radiant Barrier Siding
- 6'4" side walls with 2x4 studs 16" in center
- 5/8" Tongue and groove plywood flooring or 3/4 Advantech

321 Electric Package-100 amp panel box, 2 center ridge mount lights with one switch, 3 outlets with covers and pigtail



- 23/32 x 4 x 8 LP Prostruct shed floor
- Spring loaded barrel bolts and metal thresholds and tension bars on doors

